



The Aspen

(919) 420-3354

Sales@SwordDevelopment.com

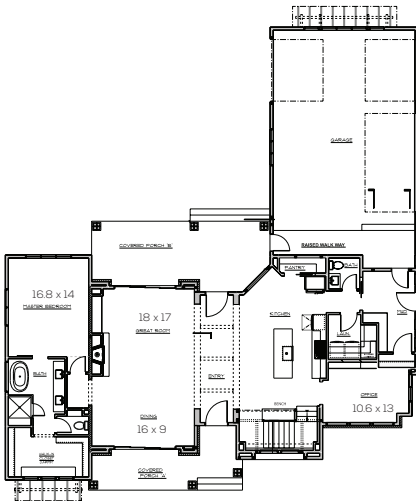


HOUSE DESCRIPTION

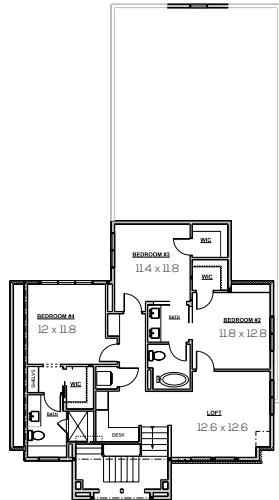
3011 sq. ft.

Welcome Home to the Aspen, a beautiful Modern Farmhouse plan where open concept meets beauty. An open kitchen layout features a beautiful island, ample storage, Stainless Appliance package, soft close doors, and drawers and your choice of granite or quartz countertops. Beautiful Engineered Hardwoods, Family Room built-ins, and fabulous trim package. A Separate office/study tucked off the kitchen makes work from home a pleasure. The owner's suite, just off the Great room on the main level has a free standing tub and huge walk-in closet. Upstairs features a large loft and 3 additional large bedrooms with ample closet space. Entertain or relax on the large front porch and/or screened in back patio.

FIRST FLOOR PLAN



SECOND FLOOR PLAN



MAP LEGEND

-  Public Schools
-  Golf/Country Clubs
-  Shopping
-  Morningson Estates
-  Lake
-  Hardware
-  Sheetz



MorningtonEstates