



The Cherry Blossom

(919) 420-3354

Sales@SwordDevelopment.com

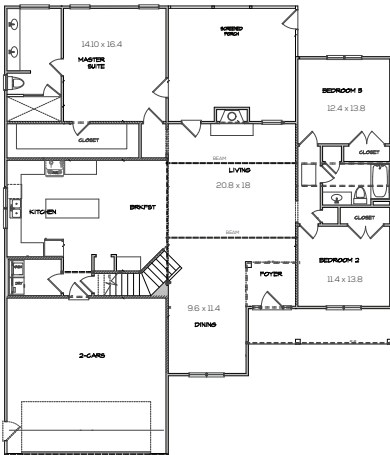


HOUSE DESCRIPTION

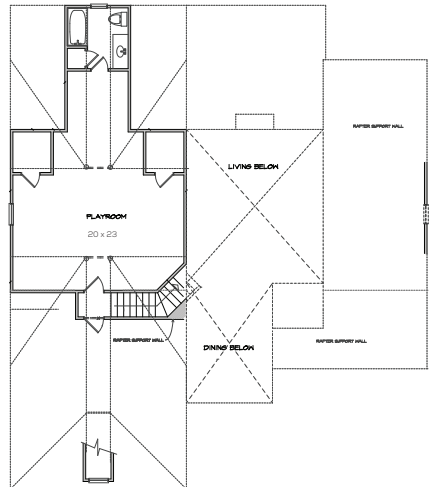
2731 sq. ft.

Main Floor Living in this Parade of Homes Gold Award winning design, the CHERRY BLOSSOM! A welcoming Foyer leads to spacious Dining and Family rooms adjoining a Gourmet Kitchen with a Large Island and Plenty of Storage. Striking Design throughout, Designer Lighting and Detailed Wood Trim. Large Owner's Suite with generous Walk-in-Closet and roomy Spa-Bath Retreat and two secondary bedrooms on the main level. Venture upstairs to the Giant Bonus Room with Full Bath or outside to the Screened-In Porch.

FIRST FLOOR PLAN



SECOND FLOOR PLAN



MAP LEGEND

-  Public Schools
-  Golf/Country Clubs
-  Shopping
-  Morningson Estates
-  Lake
-  Hardware
-  Sheetz

