



The Juniper

(919) 420-3354

Sales@SwordDevelopment.com

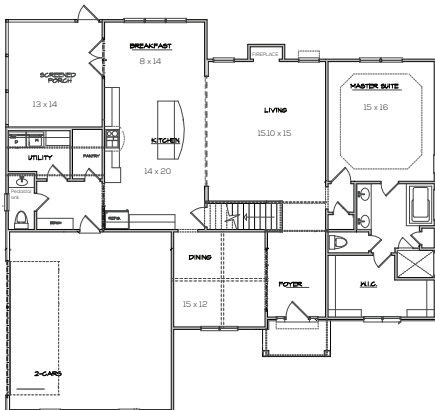


HOUSE DESCRIPTION

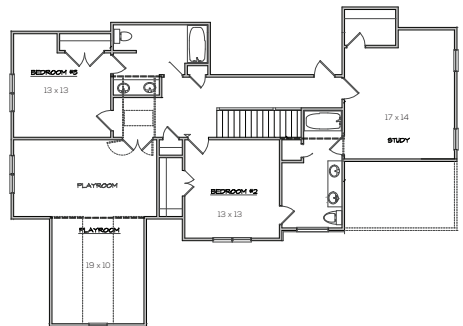
3351 sq. ft.

Entertainer's Dream Home The Juniper with grand family room, open kitchen with a huge buffet island. Main level Master Suite with Spa bath retreat & tremendous walk in closet! Separate formal dining/office. Venture upstairs to find 3 secondary bedrooms all with en-suite baths, plus Recreation Room a walk-up attic increases storage space and future options. Screened porch overlooks spacious yard.

FIRST FLOOR PLAN



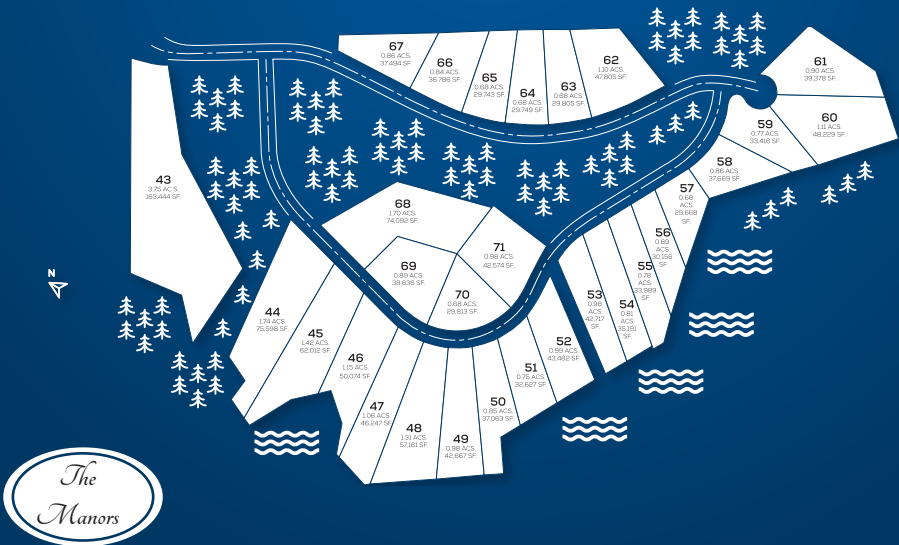
SECOND FLOOR PLAN



Home Features

- 30 year architectural roofing shingles
- Engineered Hardwood floors
- Decorative paneling in Dining room and Foyer
- Moen pull out kitchen faucet
- Soft close dovetail drawers in the kitchen
- Walk in closets
- Quartz countertops in the master bath
- Site built engineered framing package
- 5 year HVAC component warranty
- Exclusive 12 month Sword development warranty
- Mornington Estates HOA

Plat map



MAP LEGEND

-  Public Schools
-  Golf/Country Clubs
-  Shopping
-  Morningson Estates
-  Lake
-  Hardware
-  Sheetz

