



# The Willow

---

(919) 420-3354

[Sales@SwordDevelopment.com](mailto:Sales@SwordDevelopment.com)

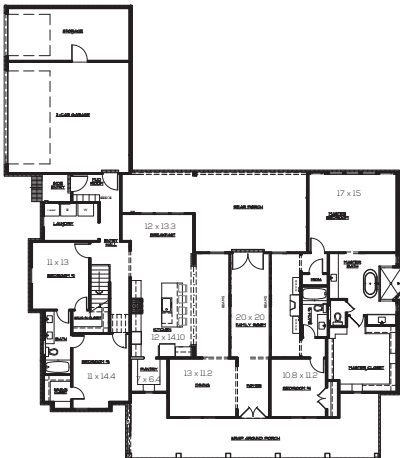


# HOUSE DESCRIPTION

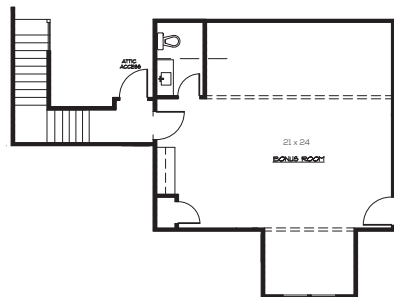
**3500 sq. ft.**

Classic and tasteful, The Willow is a Ranch plan for the new century. This exclusive farmhouse design draws all eyes to the wraparound porch. The entry foyer is flanked by a formal dining room that then flows into an expansive and inviting family room open to the gourmet chef's kitchen with grand buffet island, walk-in pantry and light filled breakfast room. Your choice of cabinet finishes, soft close doors and drawers, stainless appliance package and choice of granite or quartz countertops. An exceptional owner's suite with vaulted ceilings including a spa like bathroom and a dream come true walk-in closet. Three additional bedrooms and two additional baths on the 1st floor. A view of the large rear covered porch adds to the living and entertaining areas.

## FIRST FLOOR PLAN



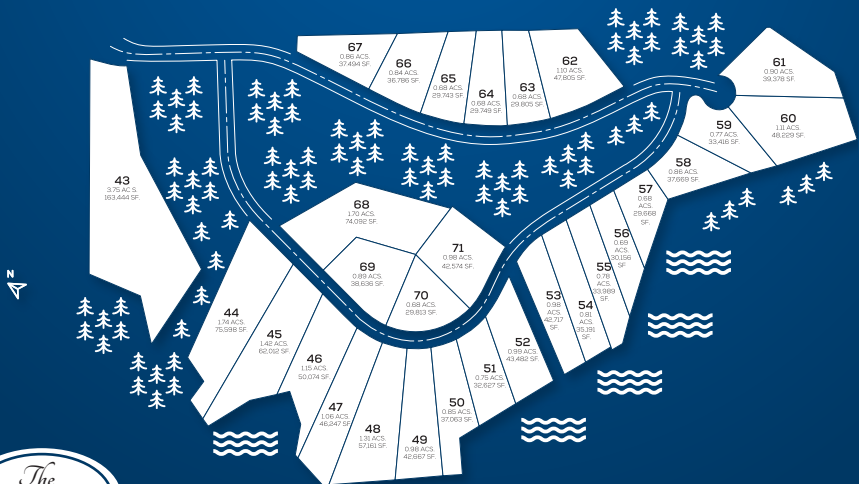
## SECOND FLOOR PLAN



# Home Features

- 30 year architectural roofing shingles
- Engineered Hardwood floors
- Decorative paneling in Dining room and Foyer
- Moen pull out kitchen faucet
- Soft close dovetail drawers in the kitchen
- Walk in closets
- Quartz countertops in the master bath
- Site built engineered framing package
- 5 year HVAC component warranty
- Exclusive 12 month Sword development warranty
- Mornington Estates HOA
- 3500 sq. ft.

## Plat map



# MAP LEGEND

-  Public Schools
-  Golf/Country Clubs
-  Shopping
-  Morningson Estates
-  Lake
-  Hardware
-  Sheetz

